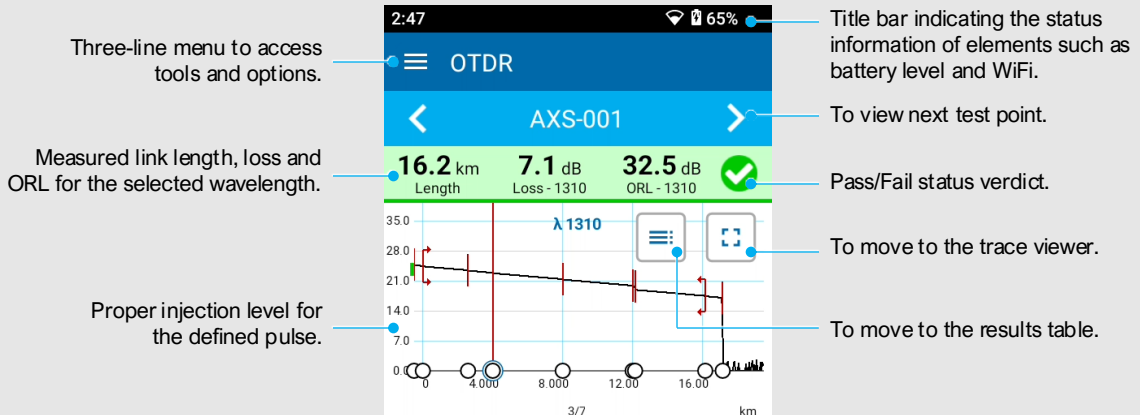
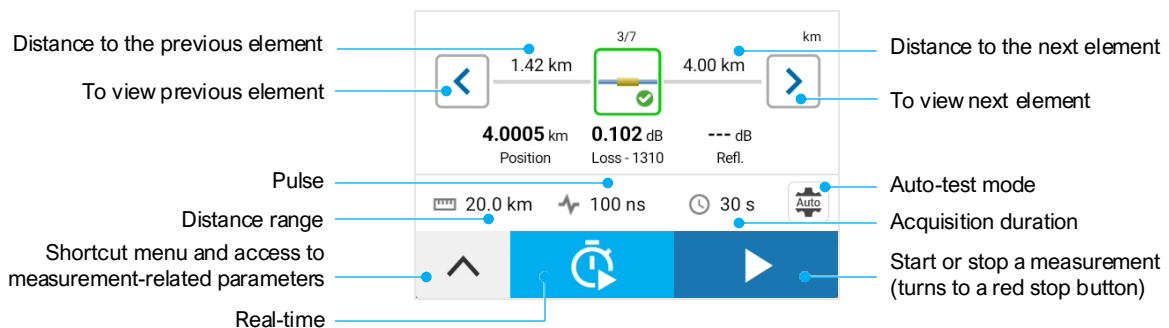


# AXS-120 compact OTDR

EXFO's renowned OTDR accuracy, reliability and durability in a compact form factor.



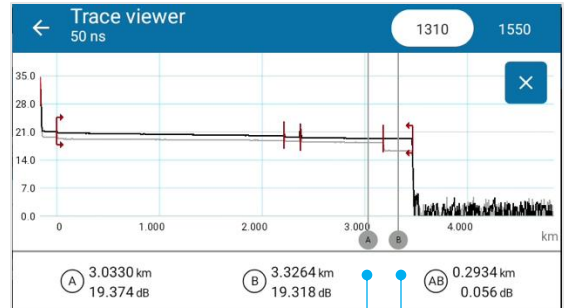
## Optical Link Map



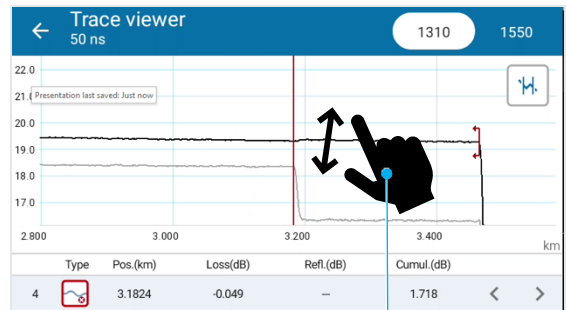
# AXS-120 compact OTDR

EXFO's renowned OTDR accuracy, reliability and durability in a compact form factor.

QUICK REFERENCE GUIDE



Manual measurements with two markers

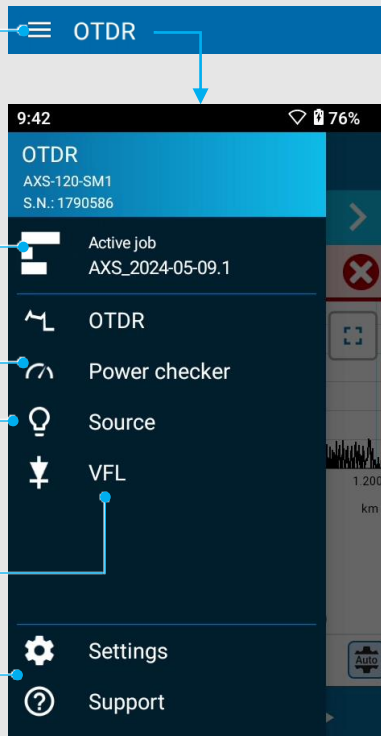


Zoom on elements

Landscape view available at the click of a button:

- Investigate the trace efficiently.
- Manual measurements with two markers.
- Zoom freely on the overall trace or on specific elements.

Burger menu



From the *My jobs* page, view the complete list of jobs that were created and saved on your unit or that have been sent to your unit using the EXFO Exchange mobile application.

Measure optical power and adjust thresholds by wavelength, on the same OTDR port.

Use the light source on the same OTDR port and emit a tone that can be detected by a live fiber detector (LFD), a power meter or by another AXS unit to trace/identify a specific fiber.

Set the continuous or blink visible light emission.

Adjust application and unit settings.

Create your free  
EXFO Exchange account



Go to  
product page



EXFO