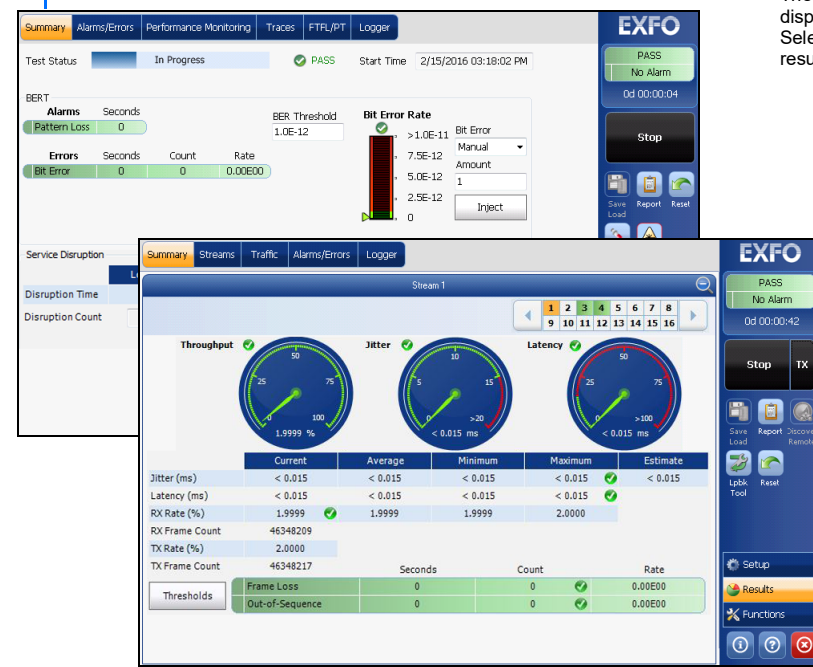


Getting Results

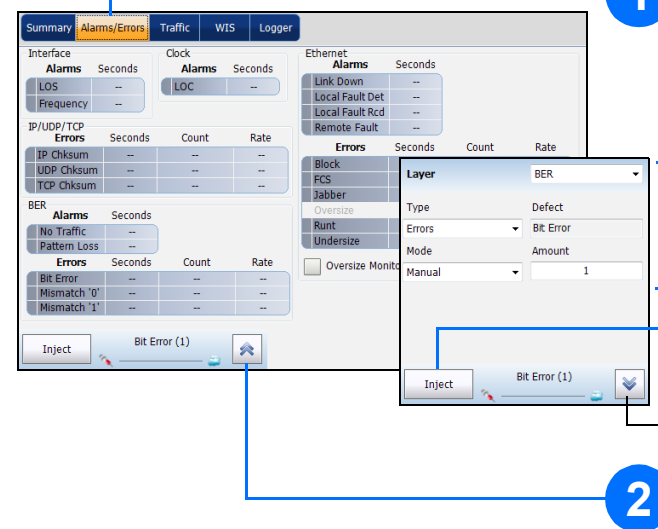


The **Summary** tab is automatically displayed once the test is started. Select a tab to get additional test results.

The **Stop** button is displayed when the test is running.

Test control buttons are reconfigured according to the test application and status.

Alarm/Error Injection



1 Tap the **Alarms/Errors** tab.

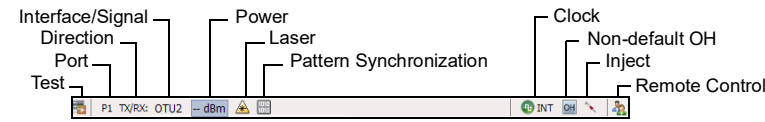
3 Select the alarm/error to be injected and its parameters.

4 Tap **Inject**.

Hides the alarm/error selection.

2 Tap to select an alarm/error.

Status Bar



Additional Status Bar Symbols:

	Connection between two testing units (Dual Test Set or Loop Up)
	Loopback Tool

Global Indicator

The global indicator displays the pass/fail verdict, global alarm, timer, and/or test duration.



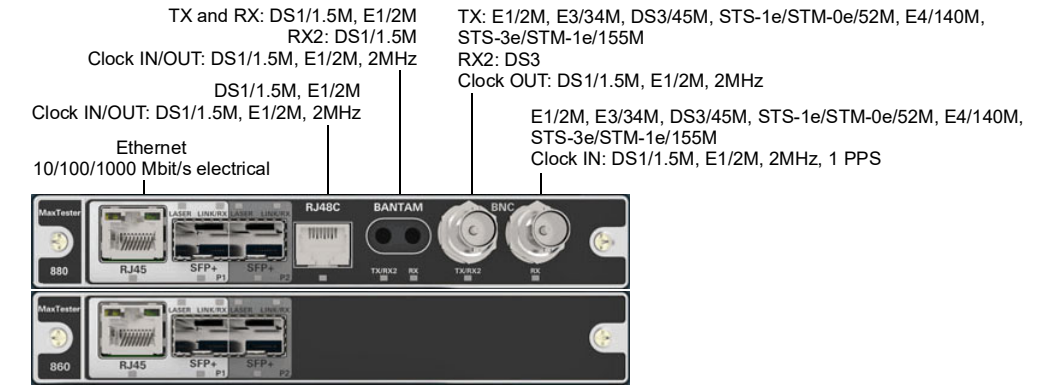
Tap anywhere within the global indicator area to see the maximized view of these indicators.

Test Control Buttons

	Start Stop TX	Starts test. Available when the test is not running. Stops test. Available when the test is running. Enables traffic generation and starts test. Available with Traffic Gen & Mon.
	Save Load	Saves, loads, imports, exports, and deletes configuration file(s). Available when the test is not running.
	Report	Saves, opens, imports, exports, and deletes test report(s). Available when the test is running or stopped, but the report generation (save) is only possible when the test is stopped.
	Laser (on)	Indicates that the laser control is on (for at least one lane for parallel interface); the laser button has a red border. Tapping this button will turn off the laser (for all lanes for parallel interface). Only available with optical ports.
	Laser (off)	Indicates that the laser control is off (for all lanes for parallel interface). Tapping this button will activate the laser immediately by emitting an optical laser signal (on all lanes for parallel interface). Only available with optical ports.
	Reset	Clears results, statistics, and logger content. Available when the test is running.
	Inject	Injects alarms/errors based on settings from the Inject button from the Results - Alarms/Errors tab.
	Discover Remote	Discovers and connects to a remote module that loops back the traffic via Smart Loopback or Dual Test Set (DTS).
	Lpbk Tool	Loops back the Ethernet frames/packets that are received on the port unused by the main test application.
	More/Less	The More/Less button appears when there is not enough room to display all available test control buttons.

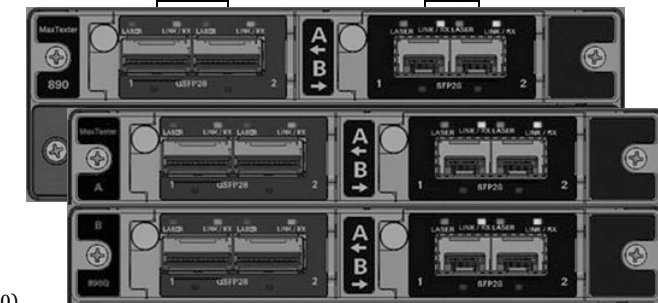
Physical Interfaces

Connect the signal to the corresponding interface on the module. For optical interfaces, make sure to insert the proper transceiver and carefully connect optical fiber cables to the transceiver IN (RX) and OUT (TX) ports.



Ethernet 100 Mbit/s, 1000 Mbit/s, 10 Gbit/s¹ LAN/WAN optical
Ethernet 10/100/1000 Mbit/s electrical (using active copper SFP)²
MAX-880/890/890Q: OC-1/STM-0, OC-3/STM-1, OC-12/STM-4, OC-48/STM-16, OC-192/STM-64
MAX-880/890/890Q: OTU1, OTU2, and for 890/890Q: OTU2f, OTU1f, OTU2e, OTU1e

Ethernet 40/100 Gbit/s
OTU4, OTU3



1. Not available on MAX-860.
2. Only available on P2 (MAX-860/860G/880).

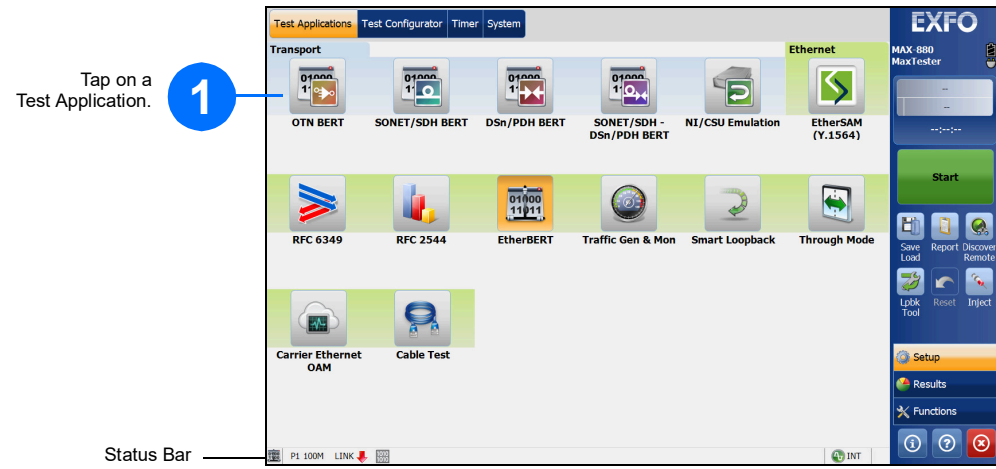
Starting the Application

From Mini ToolBox, tap the application button. For MAX-890Q there is an application for each part of the unit: A and B.

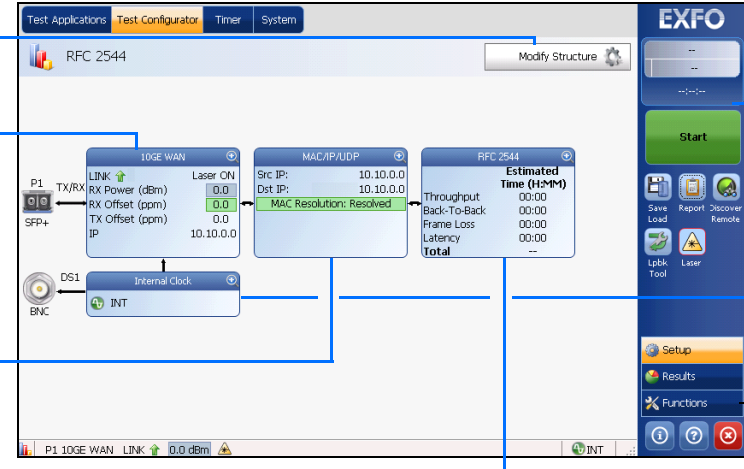
For more information, refer to the user guide.



Selecting, Configuring, and Starting a Test



- 2 Tap the **Modify Structure** button to set the basic structure of the test such as interface/rate, connector, etc.
- 3 Tap the interface block to configure the interface/signal parameters. Ensure that the link is up and the power level (when supported) is present in the status bar before proceeding to the next step.
- 4 Tap the protocol block to configure either the frame structure and its parameters for Ethernet test applications or the embedded signal for Transport test applications. This block is not present for all tests.



- 7 Tap the **Start** button to start the test.
- 6 Tap the clock block to configure the clock synchronization (only available on MAX-860G using 10G WAN interface and on MAX-880).

Note: For advanced testing, tap the **Functions** button.

- 5 Tap the test block to configure specific test settings. This block is not present for all tests.

